



# PLIOCATCH

Befestigungszubehör

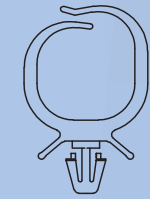


III/13 - 0960 0003 0018D

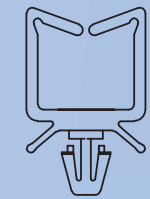
**SES-STERLING**  
[www.ses-sterling.com](http://www.ses-sterling.com)



### Stecksocket genietet



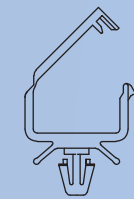
TE-R350



MU-R200

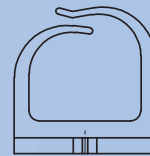


OM-R150

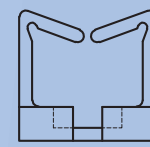


GA-R200

### Stecksocket geschraubt



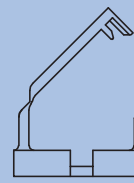
TE-V350



MU-V200



OM-V150

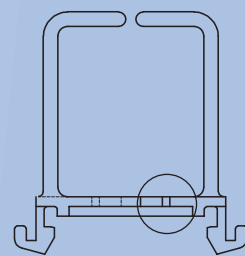


GA-V200

### Stecksocket geklipst



Befestigung nach DIN, mit Klips für Haltegitter oder Schienen in Schaltkästen oder Schaltschränken.



PI-D1100



Kerbe für die Positionierung der Kabelbinder. Die Verwendung eines Kabelbinders ist optional.

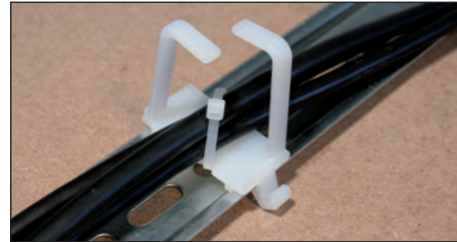
Befestigungssystem zur Montage an Blechen oder Maschinen. Durch die verschiedenen Befestigungsclips, können Kabel ohne Probleme hinzugefügt oder entfernt werden.





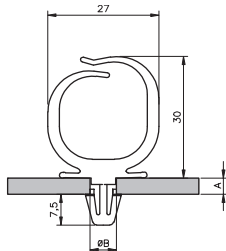
### PLIOCATCH

**Material:** Polyamid 6.6  
**Farben:** natur, schwarz  
**Temperaturbereich:** -40 bis +85°C  
**Flammschutz:** V2 UL94

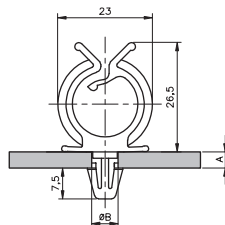


### • PLIOCATCH genietet

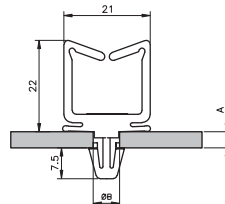
Typ	Art. Nr. natur	Art. Nr. schwarz	A mm	ØB mm	
TE-R350	0190 0121 018	0190 0121 010	1 ... 3	6 ... 6,4	100
OM-R150	0190 0221 018	0190 0221 010	1 ... 3	6 ... 6,4	100
MU-R200	0190 0321 018	0190 0321 010	1 ... 3	6 ... 6,4	100
GA-R200	0190 0421 018	0190 0421 010	1 ... 3	6 ... 6,4	100



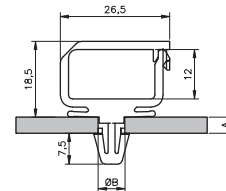
TE-R350



OM-R150



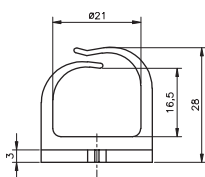
MU-R200



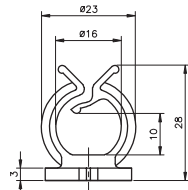
GA-R200

### • PLIOCATCH geschraubt

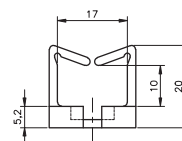
Typ	Art. Nr. natur	Art. Nr. schwarz	
TE-V350	0190 0111 018	0190 0111 010	100
OM-V150	0190 0211 018	0190 0211 010	100
MU-V200	0190 0311 018	0190 0311 010	100
GA-V200	0190 0411 018	0190 0411 010	100



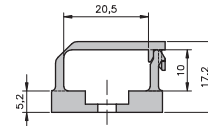
TE-V350



OM-V150



MU-V200



GA-V200

### • PLIOCATCH geklipst

Typ	Art. Nr. natur	Art. Nr. schwarz	
PI-D1100	0190 0531 018	0190 0531 010	100

