



PLIOCATCH

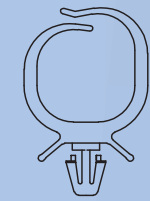
Accessoires de fixation



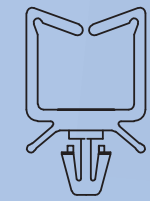
N°13 - 0860 0003 0018F

SES-STERLING
www.ses-sterling.com

Bloc câbles à rivet



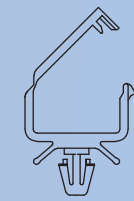
TE-R350



MU-R200

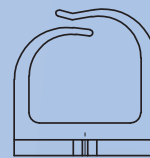


OM-R150

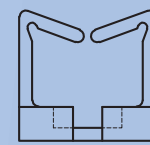


GA-R200

Bloc câbles à visser



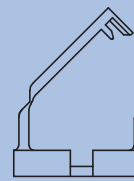
TE-V350



MU-V200

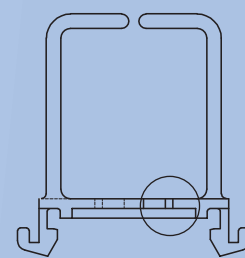


OM-V150



GA-V200

Bloc câbles à clip



PI-D1100



Encoche pour positionnement du collier.
L'utilisation d'un collier est facultative.

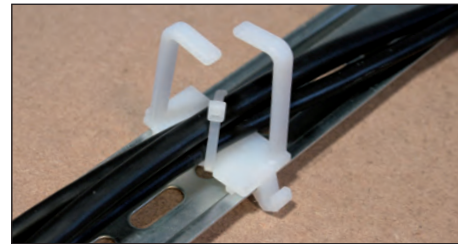
Accessoires de fixation pour machines et armoires électriques. Ils permettent l'ajout ou la suppression de câbles pour un faible encombrement.

Fixation par clip sur grille support d'appareillage ou sur rail DIN en coffrets ou armoires électriques.



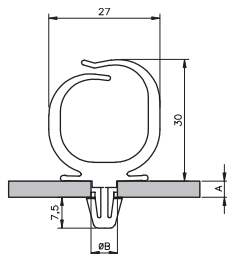
PLIOCATCH

Matière : polyamide 6.6
Coloris : naturel - noir
Températures d'utilisation : -40 à +85°C
Tenue du feu : V2 UL94

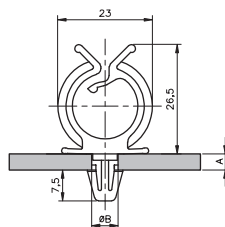


• PLIOCATCH à rivet

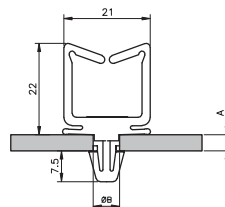
type	code article naturel	code article noir	A mm	ØB mm	
TE-R350	0190 0121 018	0190 0121 010	1 ... 3	6 ... 6,4	100
OM-R150	0190 0221 018	0190 0221 010	1 ... 3	6 ... 6,4	100
MU-R200	0190 0321 018	0190 0321 010	1 ... 3	6 ... 6,4	100
GA-R200	0190 0421 018	0190 0421 010	1 ... 3	6 ... 6,4	100



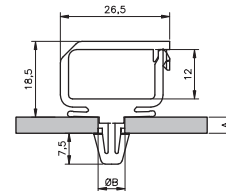
TE-R350



OM-R150



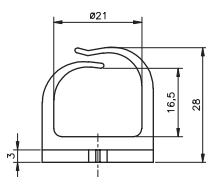
MU-R200



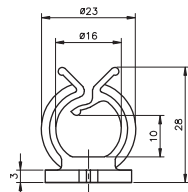
GA-R200

• PLIOCATCH à visser

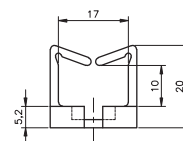
type	code article naturel	code article noir	
TE-V350	0190 0111 018	0190 0111 010	100
OM-V150	0190 0211 018	0190 0211 010	100
MU-V200	0190 0311 018	0190 0311 010	100
GA-V200	0190 0411 018	0190 0411 010	100



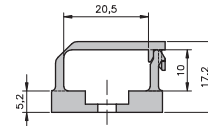
TE-V350



OM-V150



MU-V200



GA-V200

• PLIOCATCH à clip

type	code article naturel	code article noir	
PI-D1100	0190 0531 018	0190 0531 010	100

